

IT9000



**Universal
Weighing Terminal,
W&M Approved,
for Industrial Use**

IT9000

The freely programmable weighing terminal for industrial weighing systems

Stainless steel housing IP65

Suitable for harsh environment weighing locations. With mounting brackets for desk-top or wall-mount installation. Integrated power supply unit, sealed cable glands for all cable connections.



VFD Dual-line display

2 x 20 characters, alphanumeric, multi-lingual operator prompts and calibration dialog.

Keyboard

With function keys for zero setting, taring and printing, numeric keys for the entry of manual tare and IDs.

Alphanumeric entries possible via multiple key assignment.

Application-specific functions directly accessible via function keys.

Power supply

115 – 240VAC (integrated) for stationary use or 12 – 30VDC (integrated) for mobile use.

Universal use

Industrial design, modular concept, proven standard programs and free programmability make the IT9000 the ideal weighing terminal for:

shipping and receiving scales, batching and recipe weighing systems, filling controllers for drums or IBCs and for weighing installations with customized operating sequences.

Weighing electronics

For the connection of 1 or 2 scale platforms with a max. of 12 analog loadcells the IT9000 provides a W&M approved resolution of up to 6000d with max. 80% preload. Calibration is possible as single or multiple-range (eg 3x3000d) and as single or multi-interval scale.

Internal data archive for the storage of up to 450,000 weighing transactions.

Modular concept

The modular design provides for a variety of configurations and options, such as:

- Enclosures for wall-mount, desk-top or panel-mount installation, also for use in hazardous area
- DC or AC power supply
- Connection of scales with analog or digital force transducers
- Up to 6 serial interfaces, RS232, RS485, RS422, 20mA CL selectable
- Flexible I/O concept for up to 64 inputs and outputs
- Several fieldbus interfaces, e.g. Profibus DP, DeviceNet and Interbus
- Ethernet interface
- Analog I/Os, etc.

This ensures that the optimal system configuration can be chosen, for stationary as well as mobile use. Specific software modules support the connection of PCs, PLCs, scanners, transponder systems, printers, frequency inverters and wireless communication.

Free programmability

Standard programs can be adapted to the requirements of specific applications. New programs can be designed in a very simple way on a PC with the RTG program development environment.

High operational security

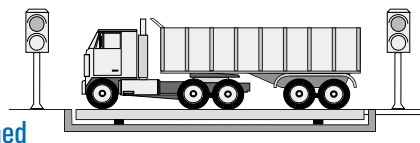
Fast and error-free operation is ensured by a high-contrast alphanumeric VFD for the indication of weight, IDs and operator prompts in combination with an easy-to-use tactile keyboard for the entry of manual tare and additional data.

IT9000 Standard programs

Detailed data sheets for the individual products are available

TRUCK/ONLINE

W&M approved truck scale terminal files for customer, supplier and product data; internal W&M approved data archive; configurable print format; switching / summing function for combined platforms; full remote control from PC



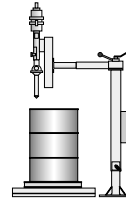
Scale with switching / summing function



Connection to: printer, PC (serially or via Ethernet), transponder system, remote display, traffic lights, etc.

FILL

Filling controller for liquids operation as automatic or non-automatic weighing instrument, fast / slow feeding with preact optimization, files for products and statistics, control of filling lance and conveyor



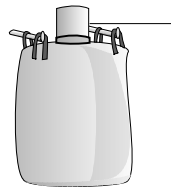
Scale to fill drums, pails, cans or hobbcks



Connection to: fieldbus (e.g. Profibus DP), label printer, PC, etc.

BIGBAG

Filling controller for IBCs with two-speed filling and preact optimization, files for product parameters and statistics, control of inflation, compression and aeration equipment, filltime check, optional fieldbus interface



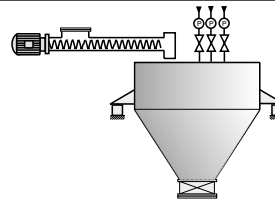
Scale integrated in IBC filling structure



Connection to: motor control center (internal PLC software optional), fieldbus, Ethernet, printer, etc.

BATCH

Multi-material batchweighing controller with files for raw materials and recipes, automatic two-speed or manual batching, synchronization steps for process control, batch protocol and material statistics



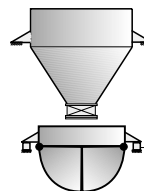
Batching of liquid or solid material



Connection to: fieldbus (e.g. Profibus DP), process control system, printer, scanner, etc.

BULK

Bulkweighing controller for shipping and receiving of bulk material via trucks, freight cars or ships; with product files and control of silos, remote control possible via fieldbus (e.g. Profibus DP)



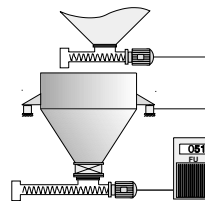
Bulkweigher



Connection to: motor control center or PLC, fieldbus, Ethernet, printer, remote display, etc.

FLOW CONTROL

Loss-in-weight controller continuous discharging from weigh hopper for the feeding of mixers or extruders, control of screw or vibratory feeder or adjustable valve via frequency inverter, with PID controller



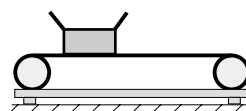
Loss-in-weight feeder



Connection to: frequency inverters (SIEMENS, Danfoss, KEB, Lenze, and others), fieldbus, printer, etc.

CHECK

Checkweighing terminal for piece goods checkscale with belt or roller conveyors, operation in dynamic or start / stop mode, 5 tolerance zones, files for products and statistics



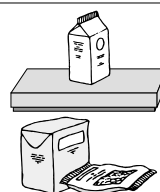
Scale with belt or roller conveyor



Connection to: light barriers, rejecter, scanner, PLC or fieldbus, printer, etc.

SOC

Sample scale as per FPVO (Finished Packaging Regulation) capturing and printout of statistical data for 200 products on 20 production lines, check by weight or volume, with entry of additional IDs



Desk-top, bench or floor scale



Connection to: printer, scanner, PC, etc.

IT9000

The freely programmable weighing terminal for a variety of applications

Technical data

Weighing electronics

For the connection of 1 or 2 scale platforms with a max. of 12 analog loadcells in 4- or 6-wire technique, W&M approved resolution 6000d, at a max. of 80% preload, internal resolution 524,000d, 50 updates per sec., input signal $0.67\mu V/e$.
Option: connection of scale platforms with digital force transducers (Mettler-Toledo, Sartorius, HBM, REVERE, and others).
Option: up to 6 external scale connections.

Calibration

Setup as single or multiple range scale with 1, 2 or 3 ranges or as multi-interval scale. Calibration with test weights or through entry of rated output of loadcell(s), option for the linearization of the load curve. Clear operator prompts for all steps of calibration sequence.

Electrical connection

115(-15%) to 240(+10%)VAC, 50/60Hz via integrated power supply, option: 12 – 30VDC, power consumption max. 25VA.

Operating temperature

-10°C to +40°C, 95% relative humidity, non-condensing.

Display and keyboard

2x20-character alphanumeric VFD display, height of characters 11mm, for indication of weight and operator prompts and calibration.

Sealed membrane **keyboard** with tactile feedback, with numeric keys for the input of tare weights and additional information, scale keys for zero setting and taring and function keys. Input of alpha characters via multiple assignment of numeric keys.
Optional connection of PC keyboard.

Serial interfaces

Up to 6 interfaces, selectable RS232, 20mA CL, RS422 or RS485, for printer, host communication, precision scales and other peripheral devices, protocols for PC, printer and remote display configurable.

Parallel I/Os

16 internal optoisolated inputs and outputs, 24VDC, or external relay / transistor module (64 inputs, 64 outputs max.)

Fieldbus interface Profibus DP, alternatively Interbus, DeviceNet or Modbus (RTU).

Analog interfaces

Option to connect external module with 4 analog inputs/outputs.

Ethernet connection

Via external EtherPort gateway.

Security

Powerfail safe storage of data, password protection, rechargeable battery-backed realtime clock, remote diagnosis.

Free programmability

Comprehensive, PC-based RTG *W/M* program development and test environment including program generator (CASE tool), Pascal and PLC instruction lists.

Options

W&M approved data archive on PC, storage of weighing data on the PC's harddisk, longterm archiving possible over several years.

Backup & Restore

Software to backup data on PC.

PC COM+

ActiveX component for PC connection.

Construction:

Wall-mount / desk-top version



- Stainless steel housing, IP65
- Available for desk-top or wall-mount installation or with optional column for floor mounting
- Dimensions WxHxD: 300x210x150mm
- As option with ATEX approval for Ex zone 2

Split-mount version



- Stainless steel housing, IP65
- Panel-mount installation with connection to S/S blackbox
- Dimensions WxHxD: 300x210x57mm (operator unit) 290x230x65mm (S/S blackbox)
- As option with ATEX approval for Ex zone 2

19" rack-mount version



- 19" rack-mount housing, fascia plate protection to IP54
- Installation in switch cabinet (3U)
- Dimensions WxHxD: 483x132,5x150mm

Ex version



- Intrinsically safe operator unit, IP65, for installation in Ex zone 1
- 24VDC power supply and S/S blackbox in safe area
- Dimensions WxHxD: 335x330x105mm (operator unit), 290x230x65mm (S/S blackbox)

IT9000 conforms to EN 45501 - EN 50081-2 - EN 50082-2 - EN 60950
EC-approval as non-automatic scale



SysTec Systemtechnik und Industrieautomation GmbH
Ludwig-Erhard-Str. 6 · D-50129 Bergheim-Glessen
Tel. +49 (0) 2238 - 9663-0 · Fax: +49 (0) 2238 - 9663-10
E-Mail: info@systecnet.com

Subject to change without notice

Sales and service